

[Bridal Banquet]

- KURETAKESO**
[Head Office] 1-1-26 Higashiiba, Chuo Ward, Hamamatsu city, Shizuoka Prefecture, 432-8036 Japan
TEL.053-453-1511 FAX.053-456-0897
URL http://www.villa-kuretake.co.jp E-mail info@villa-kuretake.co.jp
[Direct line to Bridal Division] TEL.053-453-6210 FAX.053-456-0897
[Direct line to Banquet reservation Division] TEL.053-453-3878 FAX.053-456-0897
- THE KUSUNOKI CLUB**
2 Hachimaeh-cho, Chuo Ward, Hamamatsu city, Shizuoka Prefecture, 430-0918 Japan
TEL.053-411-8111 FAX.053-411-8112
URL http://www.kusunoki-club.jp/ E-mail info@kusunoki-club.jp
- THE VILLA HAMANAKO**
1380 Hide, Kosai city, Shizuoka Prefecture, 431-0411 Japan
TEL.053-573-2522 FAX.053-573-2520
URL http://www.villa-hamanako.jp/ E-mail info@villa-hamanako.jp
- KAKEGAWA GRAND HOTEL**
1-3-1 Kamenoko, kakegawa city, Shizuoka Prefecture, 436-0028 Japan
[Direct line to Bridal Division] TEL.0537-23-2210 FAX.0537-23-3198
URL http://www.kakegawagrand.com/ E-mail sales@kakegawagrand.com
- HAMANAKO BENTENJIMA RESORT THE OCEAN**
3285-88 Bentenjima, Miasaka-cho, Chuo Ward, Hamamatsu city, Shizuoka Prefecture, 431-0214 Japan
TEL.053-592-1155 FAX.053-592-1171
URL http://kts-the-ocean.com/ E-mail info@kts-the-ocean.com
- NUMAZU RIVER SIDE HOTEL**
100-1 Agetsuchi-cho, Numazu city, Shizuoka Prefecture, 410-0802 Japan
TEL.055-952-2411 FAX.055-952-2455
URL http://www.numazu-rs-hotel.com/ E-mail info@numazu-rs-hotel.com
- GAMAGORI CLASSIC HOTEL**
15-1 Takeshima-cho, Gamagori city, Aichi Prefecture, 443-0031 Japan
TEL.0533-68-1111 FAX.0533-68-1199
URL http://www.classic-hotel.jp/ E-mail front@gamagorich.com
- KANAZAWA KOKUSAI HOTEL**
8 Onukamaci ru, Kanazawa city, Ishikawa Prefecture, 921-8565 Japan
TEL.076-296-2611 FAX.076-298-1139
URL http://www.kanazawakokusaihotel.co.jp/index.html
E-mail shukoku@kanazawakokusaihotel.co.jp
- KAREN HAMANAKO WITH DOG [Business Partner Facilities]**
1788-1 Kurematsucho, Chuo Ward, Hamamatsu City, Shizuoka Prefecture, 431-1202 Japan
TEL.053-543-9011 FAX.053-543-9012
URL https://karenhamanako.jp
- ANTHEA COTEAU**
10-6 Ushikorobi, Tozokicho, Okazaki City, Aichi Prefecture, 444-0840 Japan
TEL.0564-53-5351
URL https://www.antheacoteau.com

[Designated administrator]

- KAKEGAWA CASTLE PARK**
1138-24 Kakegawa, Kakegawa city, Shizuoka Prefecture, 436-0079 Japan TEL.0537-22-1146
- UMIBE NO Literary Memorial Hall**
15-62 Takeshimacho, Gamagori City, Aichi Prefecture 443-0031 Japan TEL.0533-67-0070
- Ikaruganosato Tourist Information Center Horyuji i Center**
1-8-25 Horyuji, Ikaruga-cho, Ikoma-gun, Nara Prefecture 636-0116 Japan TEL.0745-74-6800

[Nursery school/Welfare business]

- HAMAMATSU TAKENOKO NURSERY SCHOOL**
9-31 Sugawara, Chuo Ward, Hamamatsu City, Shizuoka Prefecture, 432-8041 Japan
- KAKEGAWA TAKENOKO NURSERY SCHOOL**
1-69 Kamenoko, Kakegawa City, Shizuoka Prefecture, 436-0028 Japan
- TAKENOKO NURSERY SCHOOL NUMAZU OTEMACHI**
5-5-2 Otemachi, Numazu City, Shizuoka Prefecture, 410-0801 Japan
- TAKENOKO CLUB IWATA**
3300-7 Nakazumi, Iwata City, Shizuoka Prefecture 438-0078 Japan
- KYOSEI NO IE**
4-9-16 Ainominami, Fukuroi City, Shizuoka Prefecture 437-0040 Japan
- ETERNAL HAMAMATSU**
1-10-21 Higashiiba, Chuo Ward, Hamamatsu City, Shizuoka Prefecture 432-8036 Japan
TEL.053-533-9166

[RESTAURANT CHAIN]

- YAKINIKU KING SHITORO**
1-39-34 Shitoro-cho, Chuo Ward, Hamamatsu city, Shizuoka Prefecture, 432-8066 Japan TEL.053-448-1129 FAX.053-448-1211
- Cafe K's Cafe**
3300-7 Nakazumi, Iwata city, Shizuoka Prefecture, 438-0078 Japan
TEL.0538-39-1156
- Restaurant LUXE oriental cafe&bar Colombo**
Japanese Zashiki Restaurant **HACHYOTEI**
1-1-26 Higashiiba, Chuo Ward, Hamamatsu city, Shizuoka Prefecture, 432-8036 Japan TEL.053-453-1511
- Casual Restaurant THE CHADOKORO**
1-3-1 Kamenoko, kakegawa city, Shizuoka Prefecture, 436-0028 Japan
TEL.0537-23-3333
- Western Restaurant PACIFIC DINING**
3285-88 Bentenjima, miasaka-cho, Chuo Ward, Hamamatsu city, Shizuoka Prefecture, 431-0214 Japan TEL.053-592-1155
- Japanese food Restaurant KANOAWA**
Dining Restaurant **KEYAKI Lounge RIVER VIEW**
100-1 Agetsuchi-cho, Numazu city, Shizuoka Prefecture, 410-0802 Japan
TEL.055-952-2411
- MAIN DINING ROOM Steak & Seafood ROKKAKUDO**
Japanese Kaiseki and Western **TAKESHIMA Lounge Bar AZALEA**
15-1 Takeshima-cho, Gamagori city, Aichi Prefecture, 443-0031 Japan
TEL.0533-68-1111
- Lounge Restaurant Grand Terrace**
1988 Niihashi, Gotemba city, Shizuoka Prefecture, 412-0043 Japan
TEL.0550-82-2177
- Japanese Restaurants KANO Buffet Restaurant CLOVER**
Steak & Seafood TAKAO Bakery & Patisserie MARUMERO
8 Onukamaci ru, Kanazawa city, Ishikawa Prefecture, 921-8565 Japan TEL.076-996-0111
- Vietnamese Restaurant HANOI**
1-15 Sakamachi, Aoi Ward, Shizuoka city, Shizuoka Prefecture, 420-0859 Japan TEL.054-252-1111
- Restaurant HAMANAKO**
5739 Shirasuka, Kosai city, Shizuoka Prefecture, 431-0451 Japan TEL.053-579-2008
- CAFE VERDE SHIZUOKAYATAI**
1-1-4 Otemachi, Numazu city, Shizuoka Prefecture, 410-0801 Japan TEL.055-941-5772

- MARINA VILLA**
1380 Hide, Kosai city, Shizuoka Prefecture, 431-0411 Japan
TEL.053-573-2522 FAX.053-573-2520
URL http://www.villa-hamanako.jp E-mail info@villa-hamanako.jp
- HAMANAKO BENTENJIMA RESORT THE OCEAN**
3285-88 Bentenjima, Miasaka-cho, Chuo Ward, Hamamatsu city, Shizuoka Prefecture, 431-0214 Japan TEL.053-592-1155 FAX.053-592-1171
URL http://kts-the-ocean.com/ E-mail info@kts-the-ocean.com
- GAMAGORI CLASSIC HOTEL**
15-1 Takeshima-cho, Gamagori city, Aichi Prefecture, 443-0031 Japan
TEL.0533-68-1111 FAX.0533-68-1199
URL http://www.classic-hotel.jp/ E-mail front@gamagorich.com

[Kuretake Hotel Chain]

- Business hotel**
- ACE INN MATSUSAKA** TEL.0598-25-2311 FAX.0598-25-2300
516-1 Kyuomachi, Matsusaka city, Mie Prefecture, 515-0017 Japan
- ACE INN KARIYA** TEL.0566-26-5611 FAX.0566-26-5670
2-54 Wakamatsu-cho, Kariya city, Aichi Prefecture, 448-0858 Japan
- KURATEKE INN KAKEGAWA** TEL.0537-61-1311 FAX.0537-61-1411
10-2 Ekimae, Kakegawa city, Shizuoka Prefecture, 436-0077 Japan
- KURETAKE INN HAMANAKO** TEL.053-575-1151 FAX.053-575-1161
5140 Washizu, Kosai city Shizuoka Prefecture, 431-0431 Japan
- KURETAKE INN CENTRAL HAMAMATSU** TEL.053-454-1211 FAX.053-454-1311
224-25 Tamachi, Chuo Ward, Hamamatsu city, Shizuoka Prefecture, 430-0944 Japan
- KURETAKE INN HAMAMATSU WEST I.C.** TEL.053-438-1511 FAX.053-438-1666
1-1-10 Takaokakita, Chuo Ward, Hamamatsu city, Shizuoka Prefecture, 433-8119 Japan
- KURETAKE INN IWATA** TEL.0538-39-1155 FAX.0538-39-1500
3300-7 Nakazumi, Iwata city, Shizuoka Prefecture, 438-0078 Japan
- KURETAKE INN OMAEZAKI** TEL.0537-85-1211 FAX.0537-85-1212
7644 Ikeshinden, Omaezaki city, Shizuoka Prefecture, 437-1612 Japan
- HAMILTON HOTEL -RED-** TEL.052-203-8310 FAX.052-203-8565
2-7-5 Sakae, Naka Ward, Nagoya city, Aichi Prefecture, 460-0008 Japan
- HAMILTON HOTEL -BLACK-** TEL.052-231-8310 FAX.052-231-8771
1-11-17 Sakae, Naka Ward, Nagoya city, Aichi Prefecture, 460-0008 Japan
- KURETAKE INN YAIZU EKIMAE** TEL.054-620-0011 FAX.054-620-1510
1-2-2 Ekikita, Yaizu city, Shizuoka Prefecture, 425-0028 Japan
- KURETAKE INN KIKUGAWA I.C** TEL.0537-35-1711 FAX.0537-35-2422
1989-1 Kamo, Kikugawa city, Shizuoka Prefecture, 439-0031 Japan
- KURETAKE INN MT.FUJI** TEL.0545-52-5222 FAX.0545-52-7111
1-124-1 Nagata-cho, Fuji city, Shizuoka Prefecture, 417-0054 Japan
- TOYOHASHI STATION HOTEL** TEL.0532-56-1919 FAX.0532-56-1904
103 Nishidawara-cho, Toyohashi city, Aichi Prefecture 440-0887 Japan
- HAMAMATSU STATION HOTEL** TEL.053-456-4002 FAX.053-456-4874
325-28 Sunayama-cho, Chuo Ward, Hamamatsu city, Shizuoka Prefecture, 430-0926 Japan
- KAKEGAWA STATION HOTEL** TEL.0537-23-5005 (ft.) FAX.0537-22-1171
1-5-2 Kamenokou, Kakegawa city, Shizuoka Prefecture, 436-0028 Japan
- KURETAKE INN PREMIUM HAMAMATSUCHO** TEL.03-5476-2211 FAX.03-5476-2210
1-8-18 Shiba, Minato Ward, Tokyo 105-0014 Japan
- KURETAKE INN GOTEMBA I.C** TEL.0550-70-1133 FAX.0550-70-1134
1243-6 Higashitaraka, Gotemba city, Shizuoka Prefecture, 412-0026 Japan
- KURETAKE INN PREMIUM SHIZUOKA EKIMAE** TEL.054-252-1111 FAX.054-252-1115
1-15 Sakae-cho, Aoi Ward, Shizuoka city, Shizuoka Prefecture, 420-0859 Japan
- KURETAKE INN TOKYO FUNABORI** TEL.03-5674-3111 FAX.03-5674-3113
1-7-19 Funabori, Edogawa Ward, Tokyo 134-0091 Japan
- KURETAKE INN ASAHIKAWA** TEL.0166-27-8111 FAX.0166-27-9100
9-1704-18 Aiyadori, Asahikawa city, Hokkaido 070-0034 Japan
- KURETAKE INN OKAYAMA** TEL.086-223-6231 FAX.086-223-4947
2-12-13 Ynagimachi, Kita Ward, Okayama city, Okayama Prefecture, 700-0904 Japan
- KURETAKE INN PREMIUM NAGOYA NAYABASHI** TEL.052-561-1211 FAX.052-561-1255
1-2-12 Meieki minami, Nakamura Ward, Nagoya city, Aichi Prefecture, 453-0003 Japan
- KURETAKE INN PREMIUM FUJINOMIYA EKIMAE** TEL.0544-25-1511 FAX.053-455-3120
327-11 Yuu, Fujinomiya city, Shizuoka Prefecture, 418-0065 Japan
- KURETAKE INN HAMAMATSU EKI MINAMIGUCHI PREMIUM** TEL.053-455-3111 FAX.0544-25-1500
15-14 Sunayama, Chuo Ward, Hamamatsu city, Shizuoka Prefecture, 430-0926 Japan
- KURETAKE INN OSAKA SAKAISUJIHONMACHI** TEL.06-6241-2511 FAX.06-6241-2512
2-20-3 Minami himmachi, Thuo Ward, Osaka city, Osaka Prefecture, 541-0054 Japan
- KURETAKE INN NAGOYA HISAYA ODORI** TEL.052-962-1311 FAX.052-962-1312
1-12-32 Izumi, Higashi Ward, Nagoya city, Aichi Prefecture, 461-0001 Japan
- KURETAKE INN NANKAISAKAI EKIMAE** TEL.072-229-4111 FAX.072-229-4112
3-12 1Cho Sakaebashicho, Sakai Ward, Osaka city, Osaka Prefecture, 590-0971 Japan
- KURETAKE INN MIDOSUJI HONMACHI** TEL.06-6251-0311 FAX.06-6251-0312
3-4-8 Kita kyuhoji machi, Thuo Ward, Osaka city, Osaka Prefecture, 541-0057 Japan
- HOTEL KURETAKESO TAKAYAMA EKIMAE** TEL.0577-33-7111 FAX.0577-33-7112
1-86-1 Showa cho, Takayama city, Gifu Prefecture, 506-0053 Japan
- HOTEL KURETAKESO HIROSHIMA OTEMACHI** TEL.082-241-5511 FAX.082-241-5512
3-7-3 Otemachi, Naka Ward, Hiroshima city, Hiroshima Prefecture, 730-0051 Japan
- HAMILTON HOTEL -BLUE- MEIEKI MINAMI** TEL.052-433-8310 FAX.052-433-8320
1-11-8 Meieki minami, Nakamura Ward, Nagoya city, Aichi Prefecture, 453-0003 Japan
- KITANONIWA THE KURETAKESO** TEL.053-453-7211(ft.) FAX.053-453-7212
7 Asahicho, Chuo Ward, Hamamatsu city, Shizuoka Prefecture 430-0927
- KYONOYADO KIYOMIZU GOJO KURETAKESO** TEL.075-551-3411(ft.) FAX.075-551-3421
79 Higashiyoshino-cho, Kenninji Gojo-sagaru, Higashiyama Ward, Kyoto City, Kyoto Prefecture, 605-0878 Japan
- KURETAKE INN OGAKI EKIMAE** TEL.0584-82-3411 (ft.)
3-46 Takayacho, Ogaki City, Gifu Prefecture, 503-0901 Japan
- KURETAKE INN PREMIUM FUKUROI EKIMAE** TEL.0538-44-2011 (ft.)
1129-1 Takao, Fukuroi City, Shizuoka Prefecture, 437-0023 Japan
- KURETAKE INN PREMIUM MEIEKI MINAMI** TEL.052-562-1211 (ft.)
1-23-9 Meiekininami, Nakamura Ward, Nagoya City, Aichi Prefecture, 450-0003 Japan
- KURETAKE INN PREMIUM NUMAZU KITAGUCHIMAE** TEL.055-929-2220 (ft.)
1-13 Takeshimacho, Numazu City, Shizuoka Prefecture, 410-0056 Japan
- KURETAKE INN PREMIUM SHIZUOKA ANNEX** TEL.054-205-1711 (ft.)
10-38 Hijicho, Aoi Ward, Shizuoka City, Shizuoka Prefecture, 420-0837 Japan
- KURETAKE INN PREMIUM TAJIMI EKIMAE** TEL.0572-21-5411 (ft.)
1-121 Honnachi, Tajimi City, Gifu Prefecture, 507-0037 Japan

- City hotel**
- HOTEL VILLA KURETAKE** TEL.053-453-0880 FAX.053-453-2988
1-1-26 Higashiiba, Chuo Ward, Hamamatsu city, Shizuoka Prefecture, 432-8036 Japan
- KAKEGAWA GRAND HOTEL** TEL.0537-23-3333 FAX.0537-23-2290
1-3-1 Kamenoko, kakegawa city, Shizuoka Prefecture, 436-0028 Japan
- NUMAZU RIVER SIDA HOTEL** TEL.055-952-2411 FAX.055-952-2455
100-1 Agetsuchi-cho, Numazu city, Shizuoka Prefecture, 410-0802 Japan
- THE GOTEMBAKAN** TEL.0550-82-0029 FAX.0550-84-0063
1988 Niihashi, Gotemba city, Shizuoka Prefecture, 412-0043 Japan
- KANAZAWA KOKUSAI HOTEL** TEL.076-296-0111 FAX.076-298-1139
8 Onukamaci ru, Kanazawa city, Ishikawa Prefecture, 921-8565 Japan
- NARA PARK HOTEL** TEL.0742-44-5255 FAX.0742-45-5255
4-18-1 Horai, Nara city, Nara Prefecture, 631-0845 Japan
- Due to open Spring 2026**
- HNARA ORYUJI KURETAKESO**
- Due to open Summer 2026**
- THE VILLA HAMANAKO MARINA VILLA BUILDING**
- Due to open Spring 2027**
- KURETAKE INN FUJINOMIYA VILLA BUILDING**
- Due to open Autumn 2028**
- KURETAKE INN PREMIUM TOYOHASHI**
1-chome Ohashi-dori, Toyohashi City, Aichi Prefecture, 440-0076 Japan
- Due to open Autumn 2028**
- KURETAKE INN PREMIUM SHINFUJ**
Shizuoka Prefecture, Shin-Fuji Station South Area, Temporary Replacement Land Block 4, Lot 2-1
- Due to open Autumn 2028**
- KURETAKE INN CENTRAL HAMAMATSU EXECUTIVE**

- Globalization hotel**
- KURETAKESO SANCREST RESIDENCE DELTAMAS**
Commercial Lot Blok H/03 Kota Deltamas, Desa Hegarangk, Cikarang pusat, Kabupaten Bekasi 17530
- HOTEL KURETAKESO KEMAN JAKARTA**
Jl. Bangka Raya No.7A Kemang-Jakarta Selatan 12730
- HOTEL KURETAKESO THAILAND SRIRACHA**
63/3 Thetsaban 1 Road, Sriracha, Chonburi 20110 THAILAND

What's XII

KURETAKE GROUP?

company guide



CONCEPT MAKING

Chairman of the Board
Tomoji Yamashita



Our mission to deliver the finest hospitality. We will expand business domain with the motto of Natural Management, Beyond Win-win, and Continue and Change, to advance our growth while valuing family business.

President and CEO
Akihiro Yamashita



2007/3 Graduated from Department of Commercial Science, Keio University.
2009/5 Graduated from Paul Smith's College
2009/6 Joined Tokyo-Mitsubishi UFJ Bank
2011/10 Joined Kuretakeso Co., Ltd.

Vice President
Takafumi Yamashita



2012/3 Graduated from the Department of Policy Management, Faculty of Policy Management, Keio Unive.
2013/5 Joined Kuretakeso Co., Ltd.
2016/5 Assigned to the global business division of Kuretakeso Co., Ltd.

Senior Managing Director
Shingo Yamashita



2013/3 Graduated from Comprehensive Policy Department, Keio University
2013/7 Entered Gion Institute of Higher Education Post Graduate
2015/3 Study bridal work at Tokyo Happon
2016/5 Joined Kuretakeso Co., Ltd.

Member of the Board of Directors
Megumi Katsumata



2009/3 Graduated from University of the Sacred Heart
2009/4 Joined the Shizuoka Bank Business Create Co., Ltd.
2012/4 Joined Kuretakeso Co., Ltd.
2013/4 Association of personnel affairs of Kuretakeso Co., Ltd.

Vice Chairperson
Sumino Yamashita



Since our foundation, we have grown steadily, with the generous support from our valued partners. Our mission is to deliver profoundly moving experience to all customers.

Family Business Management

Solid and ongoing management policy with responsibility for the future

KURETAKESO Holdings Co., Ltd.: New Executives

Founded as a traditional Japanese restaurant in 1948. Centering on accommodations, we now operate approximately 80 locations domestically and internationally, including bridal services, restaurants, welfare facilities, and designated administrator business. Focusing on accommodations and bridal services, we aim to open 15 new facilities and to achieve group revenue of 20 billion yen in five years.



What's KURETAKESO?

OUR MISSION

KURETAKESO group exists in society, now and for the future, to enrich the lifestyles of partners, to contribute to your well-being, and to create a peaceful and prosperous society. all our valued

Company Strategy. Three main missions

- To achieve regional No.1 Company and area "Only one Company"
- Improved steadily corporate force³ Establish the management style thorough to enforce the organization ability and system management.
- Establishment of a management style that the driving force behind the organizational strength and system

HOTEL KURETAKESO
KYOTO KIYOMIZU GOJO

Resort Hotel
Host "1,500 couples to 7,000 rooms"
Due to open 2026/spring
Business Partner Facilities

City Hotel
Nara Horyuji Kuretakeso, Karen Hamanako With Dog, Hamanako Bentenjima Resort, The Villa Hamanako, Gamagori Classic Hotel, Hotel Villa Kuretake, Kakegawa Grand Hotel, Numazu River Side Hotel, Kanazawa Kokusai Hotel

Business Hotel
Due to open 2026/autumn
Due to open 2028/autumn
Due to open 2028/autumn

Globalization
Okayama, Premium Nagoya Nayabashi, Premium Fujinomiya ekimae, Hamamatsu ekiminamiguchi Premium, Osaka Sakai Sujihonmachi, Nagoya Hinaya Odori, Nankai Sakai ekimae, Osaka Midosuji Honmachi, Hotel Kuretakeso Takayama ukimae, Hotel Kuretakeso Hiroshima Otebachi, Hamilton Hotel Blue Meieki minami, Kuretakeso Sancrest Residence Deltamas, Hotel Kuretakeso Kemang Jakarta

Bridal
Hotel Kuretakeso Thailand Sri Racha, Kuretakeso Kyuabatei Maison De Lien, Hamamatsu Hachimangu Kusunoki Club, The Villa Hamanako, Kakegawa Grand Hotel, The Ocean, Numazu River Side Hotel, Gamagori Classic Hotel, Kakegawa Castle Park

Food service industry
Kanazawa Kokusai Hotel, Antia Court, Yakiniku Kingu Shitoro, Vietnam Restaurant Hanoi, Restaurant Hamanako, Cafe Verde, Shizuoka Yatai, Gama Cafe & Bakery, K's Cafe, Plaza Verde Catering

Work Spers
Kakegawa Castle Park, Umibe no Bungaku kinenkan, Ikaruganosato Tourist Information Center Horyuji i Center

Catering
Kakegawa Castle Park, Umibe no Bungaku kinenkan, Ikaruganosato Tourist Information Center Horyuji i Center

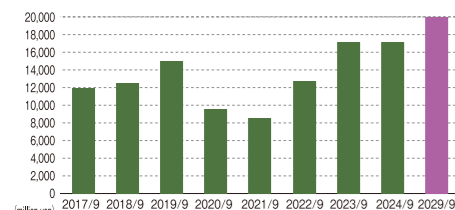
Designated Administrator
Kakegawa Castle Park, Umibe no Bungaku kinenkan, Ikaruganosato Tourist Information Center Horyuji i Center

Nursery school / Welfare business
Takenoko nursery school Hamamatsu, Takenoko nursery school Kakegawa, Takenoko nursery school Numazu Otemachi, Takenoko Club Iwata, Kyoaei no ie, Kazenosono, Eternal Hamamatsu

Company History

- 1948/10 Private foundation
- 1950/7 Reorganized to a corporation
- 1953 Renovates main building
- 1956 Extends annex
- 1965 Renovates main building
- 1966/2 Main building 4th floor, basement 1st floor newly built
- 1980/11 Extends 4 guestrooms, tea room "Yukian," 2 main banquet halls Lobby, bar, lounge photo studio, temple
- 1987/8 Opening of Annex building, 2 large banquet halls, 4 rooms
- 1992/4 Builds south wing
- 1995/8 Builds Hotel Villa Kuretake and opens 71 rooms
- 2000/4 Opens Hotel Ace Inn Matsusaka and all 111 rooms
- 2001/7 Opens Hotel Ace Inn Kariya and all 123 rooms
- 2002/10 Opens Kuretake Inn Kakegawa and all 124 rooms
- 2003/2 Opens Art Foresta, Hamamatsu Hachimangu Kusunoki Club
- 2004/3 Opens Kuretake Inn Act Hamamatsu and all 158 rooms
- 2004/7 Opens Kuretake Inn Hamanako and all 125 rooms
- 2005/1 Opens Villa Hamanako Resorts & Sea Marina Villa Total of 19 rooms (accommodates 76 people)
- 2005/9 Opens Kuretake Inn Central Hamamatsu and all 116 rooms
- 2006/3 Opens Ichiban Karubi Shitoro, 120 seats
- 2007/1 Opens Kuretake Inn Hamamatsu nishi i.c. and all 129 rooms
- 2007/7 Opens Kuretake Inn Iwata and all 112 rooms
- 2009/7 Hamilton Hotel Black(all 88 rooms) succession of a business
- 2009/7 Hamilton Hotel Red(all 53 rooms) succession of a business
- 2009/7 Opens Kuretake Inn Omazaki and all 133 rooms
- 2009/12 Kakegawa Grand Hotel(all 93 rooms) succession of a business
- 2010/2 Opens Kuretake Inn Yaizu kiname and all 117 rooms
- 2010/7 Opens Kuretake Inn Kikugawa i.c. and all 134 rooms
- 2011/6 Opens Kuretake Inn Fujisan and all 134 rooms
- 2011/7 Rebrand Opens Hamanako Benten Resort The Ocean and all 111 rooms
- 2011/11 Rebrand Opens Numazu River Side Hotel and all 136 rooms
- 2012/4 Rebrand Opens Gamagori Classic Hotel and all 27 rooms
- 2013/3 Japan Hospitality Academic Association
- 2013/4 Numazu Goyotei Memorial Park [designated administrator]
- 2013/5 Rebrand Opens Toyohashi Station Hotel and all 102 rooms
- 2013/6 Rebrand Opens Hamamatsu Station Hotel and all 62 rooms
- 2013/9 Rebrand Opens Kakegawa Station Hotel and all 50 rooms
- 2013/11 Rebrand Opens Kuretake Inn Premium Hamamatsucho and all 60 rooms
- 2013/11 Established Japan Vietnam Hotels Co., Ltd.
- 2013/12 Rebrand Opens Kuretake Inn Gotemba Inter and all 108 rooms
- 2014/2 Rebrand Opens The Gotembakan and all 50 rooms
- 2014/4 Kakegawa Castle Park [designated administrator]
- 2014/7 Rebrand Opens Kanazawa kokusai hotel and all 100 rooms
- 2014/9 Opens Kuretake Inn Premium Shizuoka ekimae and all 156 rooms
- 2014/12 Rebrand Opens Restaurant Hamanako (in the Lake Hamana Country Club)
- 2014/12 Established Kuretakeo Korea Co., Ltd. (Kuretake Inn Premium Shizuoka ekimae)
- 2015/2 Restaurant Hanoi Open (In front of Kuretake Inn Premium Shizuoka Station)
- 2015/4 Designated Management of Roadside Station Kurura Toda
- 2015/4 Established Kuretakeo Thailand Co., Ltd. (Kuretakeo Thailand Co., Ltd.)
- 2015/7 Kuretake Inn Tokyo Funabori All 76 rooms
- 2015/9 Shizuoka General Convention Facility Plaza Verde Operation of restaurant and catering division
- 2015/11 Established Kuretakeo China CO., LTD (Kuretakeo China Co., Ltd.)
- 2016/4 Established Kuretakeo Vietnam Co., Ltd.
- 2016/5 Hotel Kuretakeo Kim Ma 132 Hanoi All 85 rooms
- 2016/8 Kuretake Inn Asahikawa Rebrand Open 102 Rooms
- 2016/8 Kuretake Inn Okayama Rebrand Open 111 Rooms
- 2016/10 Established Japan Indonesia Hotel Co., Ltd.
- 2017/2 Hotel Kuretakeo Tonyum 84 Hanoi Total 182 rooms
- 2017/8 Kuretakeo Suncrest Residence Deltamas All 105 rooms
- 2017/10 Opens Kuretake Inn Premium Nagoya nayabashi All 166 rooms
- 2018/2 Opens Kuretake Inn Premium Fujinomiya ekimae All 133 rooms
- 2018/6 Opens Hotel Kuretakeo Insadong Seoul All 127 rooms
- 2018/4 Opens Kuretake Inn Hamamatsu ekiminamiguchi 160 rooms
- 2018/4 Opens Kuretake Inn Osaka sakaisuji honmachi All 110 rooms
- 2018/4 Opens Kuretake Inn Nagoya hisaya odori All 229 rooms
- 2018/7 Hamamatsu Takenoko Nursery School opened
- 2018/9 Opens Kuretake Inn Nankaisakaekimae with 122 rooms
- 2018/11 Opens Kuretake Inn Osakamidousujihonmachi with 140 rooms

Group Sales



Business activities / Affiliated organizations

- Description of business Hotel, Bridal, Banquet, Restaurant
- Affiliated association Japan hotel association / Bridal Industry Association (BIA) / Japan City Hotel Association

Overseas Group Company Overview

| Name | Representatives | Address of home office | Establishment | Capital | Employee number |
|---------------------------------|-----------------------------|--|---------------|--|---|
| Kuretakeo Thailand Co., Ltd. | President, Tomoji Yamashita | Sriracha City, Sriracha District, Thailand | April, 2015 | 3 million baht | Full timers male 10, female 5 Part timers male 10, female 5 Total 30 |
| Japan Indonesia Hotel Co., Ltd. | President, Tomoji Yamashita | Deltamas City, Bekasi Regency, Indonesia (GIC Industrial Park) | October, 2016 | 1.05 billion Vietnamese Dong (50,000 US dollars) | Full timers male 35, female 35 Part timers male 20, female 10 Total 100 |

Group Company Overview



Grand Opening of Hotel Kuretakeo Kemang Jakarta - A Gift from Junhans

- 2018/12 Ikaruga Town Marche -Project to attract businesses such as accommodation facilities
- Basic agreement signing ceremony



Ikaruga Town Marche - Accommodation and Other Business Attraction Project - Basic Agreement Signing Ceremony

- 2019/3 Opens Hotel Kuretakeo Takayamaekimae All 142 rooms
- Opens Hotel Kuretakeo Hiroshima Otemachi All 198 rooms
- Rebrand Opens Nara Park Hotel rebranded open with 35 rooms
- Takekeno nursery school Numazu Otemachi opened
- Kakegawa Takenoko Nursery School opened
- 2019/5 Opens Hamilton Hotel BLUE Meiekinimami All 96 rooms
- 2019/7 Opens Kita no Niwa THE KURETAKESO All 250 rooms
- 2019/12 Opens Hotel Kuretakeo Kyoto Kiyomizu Gojo All 75 rooms
- 2020/3 Opens Kuretake Inn Premium Ogakiekimae All 158 rooms
- 2020/5 Opens Kuretake Inn Premium Fukuroiekimae All 118 rooms



Fukuroi New Industrial Hall Kirat Completion Commemoration April 30, 2020

- 2020/8 Opens Hotel Kuretakeo Thai Sriracha All 97 rooms
- 2021/3 Opens Kuretake Inn Premium Meiekinimami All 147 rooms
- 2021/9 After school day service Takenoko Club Iwata opened
- 2021/11 Opens Kuretake Inn Premium Numazukitaguchiekimae All 158 rooms



Kuretake Inn Premium Numazu North Exit Station Opening Ceremony November 15, 2021

- 2022/2 Opens Kuretake Inn Premium Shizuoka Annex All 196 rooms
- 2022/3 Nursing home Kyosei no ie opened
- 2023/1 Kuretake Inn Hamamatsu Tajimiekimae All 161 rooms
- 2024/5 KAREN Lake Hamana with Dog 30 rooms in total (Business partner facility)
- 2024/10/1 Kuretakeo Holdings Co., Ltd. is established
- 2025/2/17 Lease agreement signing ceremony with Cataler Corporation



Kakegawa Grand Hotel Lease Agreement Signing Ceremony February 17, 2025

- 2026/spring Scheduled to open Nara Horyuji Kuretakeo All 10 buildings
- 2026/spring Scheduled to open Kuretake Inn Premium Toyohashi All 200 rooms
- 2028/autumn Scheduled to open Kuretake Inn Premium Shinjuku All 200 rooms
- 2028/autumn Scheduled to open Kuretake Inn Central Hamamatsu Executive All 93 rooms

Group Company Overview

| Name | Representatives | Address of home office | Establishment | Capital | Employee number |
|------------------------------|-----------------------------|---|---------------|--|--|
| Kuretakeo Holdings Co., Ltd. | President, Akhiro Yamashita | 1-1-26 Higashiha, center Ward, Hamamatsu City, Shizuoka Prefecture 432-8036 Japan | October, 2016 | 1.05 billion Vietnamese Dong (50,000 US dollars) | 10 million yen Full timers male 22 female 10 Part timers male 7 female 7, Total 46 |

| Name | Representatives | Address of home office | Establishment | Capital | Employee number |
|----------------------|--|---|---------------|----------------|---|
| KURETAKESO Co., Ltd. | Chairman and Representative Director, Tomoko Yamashita | 1-1-26 Higashiha, center Ward, Hamamatsu City, Shizuoka Prefecture 432-8036 Japan | October, 1948 | 40 million yen | Full timers male 110 female 90 Part timers male 80 female 220, Total 500 |

| Name | Representatives | Address of home office | Establishment | Capital | Employee number |
|------------------------------|-----------------------------|---|---------------|----------------|--|
| KURETAKESOU HOTELS Co., Ltd. | President, Akhiro Yamashita | 1-1-26 Higashiha, center Ward, Hamamatsu City, Shizuoka Prefecture 432-8036 Japan | January, 2019 | 10 million yen | Full timers male 30 female 10 Part timers male 15 female 35, Total 90 |

| Name | Representatives | Address of home office | Establishment | Capital | Employee number |
|---------------------------|-----------------------------|---|---------------|----------------|---|
| KTS Association Co., Ltd. | President, Akhiro Yamashita | 1-1-26 Higashiha, center Ward, Hamamatsu City, Shizuoka Prefecture 432-8036 Japan | August, 2021 | 10 million yen | Full timers male 39 female 35 Part timers male 30 female 65, Total 169 |

| Name | Representatives | Address of home office | Establishment | Capital | Employee number |
|--------------------------------|-----------------------------|--|---------------|----------------|---|
| KANAZAWAKOKUSAIHOTEL Co., Ltd. | President, Akhiro Yamashita | 8 Omukamaei ru, Kanazawa city, Ishikawa Prefecture, 921-8565 Japan | July, 2014 | 10 million yen | Full timers male 21 female 15 Part timers male 29 female 68, Total 133 |

| Name | Representatives | Address of home office | Establishment | Capital | Employee number |
|--------------------------------|--------------------------------------|---|---------------|----------------|---|
| KTS ASSET MANAGEMENT Co., Ltd. | Executive Director, Sumino Yamashita | 1-1-26 Higashiha, center Ward, Hamamatsu City, Shizuoka Prefecture 432-8036 Japan | January, 2008 | 10 million yen | Full timers male 25 female 15 Part timers male 5 female 40, Total 85 |

| Name | Representatives | Address of home office | Establishment | Capital | Employee number |
|--|-----------------------------|--------------------------------------|---------------|----------------|--|
| KTS OPERATION Co., Ltd. [NUMAZU RIVERSIDE HOTEL][THE GOTEMBAKAN] | President, Akhiro Yamashita | Executive Director, Sumino Yamashita | May, 2011 | 10 million yen | Full timers male 70 female 40 Part timers male 70 female 170, Total 350 |

| Name | Representatives | Address of home office | Establishment | Capital | Employee number |
|---|-----------------------------|--|---------------|----------------|--|
| GAMAGORI CLASSIC HOTEL Co., Ltd. [GAMAGORI CLASSIC HOTEL] | President, Akhiro Yamashita | 15-1 Takeshima-cho, Gamagori City, Aichi Prefecture 443-0031 Japan | April, 2012 | 10 million yen | Full timers male 20 female 20 Part timers male 20 female 20, Total 80 |

| Name | Representatives | Address of home office | Establishment | Capital | Employee number |
|--|-----------------------------|--------------------------------------|----------------|----------------|--|
| KTS TOKYO OPERATION Co., Ltd. [KURETAKE INN PREMIUM HAMAMATSUCHO] [KURETAKE INN PREMIUM TOKYOFUNABORI] | President, Akhiro Yamashita | Executive Director, Sumino Yamashita | November, 2013 | 10 million yen | Full timers male 8, female 6 Part timers male 2 female 12, Total 28 |

| Name | Representatives | Address of home office | Establishment | Capital | Employee number |
|---------------------|-----------------------------|--|---------------|----------------|--|
| Nara Park Co., Ltd. | President, Akhiro Yamashita | 4-18-1 Hori, Nara City, Nara Prefecture 631-0845 Japan | January, 1967 | 10 million yen | Full timers male 9 female 5 Part timers male 12 female 20, Total 46 |

| Name | Representatives | Address of home office | Establishment | Capital | Employee number |
|---------------------------|-----------------------------|---|-----------------|----------------|---|
| KTS HOSPITALITY Co., Ltd. | President, Akhiro Yamashita | 1-33 Kamenoko, Kakegawa City, Shizuoka Prefecture, 436-0028 Japan | September, 2009 | 10 million yen | Full timers male 55 female 20 Part timers male 40 female 70, Total 185 |

| Name | Representatives | Address of home office | Establishment | Capital | Employee number |
|------------------------------|-----------------------------|---|---------------|----------------|--|
| YAMASHITA PLANNING Co., Ltd. | President, Tomoji Yamashita | 1-1-26 Higashiha, center Ward, Hamamatsu City, Shizuoka Prefecture 432-8036 Japan | August, 2014 | 10 million yen | Full timers male 3 female 2 Part timers male 35 female 205, Total 245 |

| Name | Representative | Address of home office | Establishment | Capital | Employee number |
|---------------------------|----------------------------|--|----------------|----------------|---|
| Heisei Ceremony Co., Ltd. | Chairman, Tomoji Yamashita | 188-1 Nariuko, center ward, Hamamatsu city, Shizuoka prefecture 432-8035 Japan | November, 1997 | 10 million yen | Full timers male 3, female 5 Part timers male 5 female 205, Total 18 |

| Name | Representative | Address of home office | Establishment | Capital | Organization |
|--|----------------------------|---------------------------------|---------------|----------------|---|
| Japan Hospitality Academic Association | Chairman, Tomoji Yamashita | Vice-chairman, Sumino Yamashita | March, 2013 | 10 million yen | Managing director, executive director, and secretariat Planning and research division, consulting division |

| Name | Representative | Address of home office | Capital | Organization |
|---|----------------------------|--|----------------|---|
| Kyosei no ie General Incorporated Association | Chairman, Tomoji Yamashita | 4-9-16 Ainomimami, Fukuroi City, Shizuoka Prefecture, 437-0040 Japan | December, 2011 | Director Nursing Care Services Division, Disability Welfare Services Division |

DESIGNATED ADMINISTRATOR



Hospitality Academic Society for CSR activities (established in April 1, 2013)

KTS group defines "Global Excellent Company" as our corporate ideal, derived from our philosophy of "Thriving with the Community". As one of our missions, we undertake social responsibility that goes beyond mere business.

Achievements

- ◆Participated in the creation of a proposal for the designated management of Numazu Imperial Villa Memorial Park
- ◆Participated in the creation of a proposal for the designated management of Kakegawa Castle Park
- ◆Participated in the creation of the proposal for the designated management plan for Kurura Toda Roadside Station
- ◆Hospitality industry human resource development plan creation
- ◆Planning and proposing souvenirs that utilize local resources, etc.
- Creating a hospitality industry human resource development plans, etc.

Designated management business

Ikaruga Town, Nara Prefecture



The photo is for illustrative purposes only.

Horyuji in center: Ikaruga no Sato tourism bureau

Operating Ikaruga no Sato tourism bureau and Ikaruga-cho visitor parking lot as designated administrator since April 1, 2025.

Two-story and tile-roofed building, imaging private home in the village. Roof slope features arched design called "Mukuri". Impressive upstairs windows, called "Mushikomado".



Gamagori City, Aichi Prefecture



Seaside Literary Memorial Museum

Tokiwanan, restaurant with inn founded by Taki Nobushiro in 1912. Built in 1997, the museum preserves memory of Tokiwanan and some literary giants for 100 years. It exhibits works by Nobel Prize-winning writer Kawabata Yasunari and Gamagori-born Naoki Prize winner Miyagitani Masamitsu.



Kakegawa City, Shizuoka Prefecture

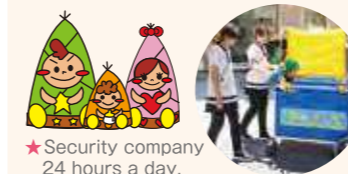


Japan's first restored wooden castle tower Kakegawa Castle

Kakegawa Castle, built as outer citadel (Ninomaru) in late Edo period, one of four valuable existing castles in Japan such as Nijo-jo, Kyoto. Known as "Shoin-zukuri", this architecture features many tatami-floored rooms separated by Fusuma slide doors.



Company-led childcare business



Hamamatsu Takenoko nursery school
9-31 Kamenoko, Chuo Ward, Hamamatsu City, Shizuoka Prefecture



- ★Security company 24 hours a day, 365 days a year
- A safe crime prevention system to watch over
- ★child care consultation It will be held!
- ★Kuretake Group "Facility discount!"

Kakegawa Takenoko nursery school
1-69 Kamenoko, Kakegawa City, Shizuoka Prefecture



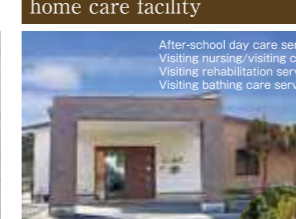
Takenoko nursery school Numazu otemachi
5-5-2 Otemachi, Numazu City, Shizuoka Prefecture



After-school day care services



Small-scale multi-functional home care facility



Multi-functional day care facility



Behavioral Support Project



Takenoko Club Iwata

3300-7 Nakaizumi, Iwata City, Shizuoka Prefecture
East side of Kuretake Inn Iwata

Kyoseinoie

4-9-16 Ainomimami, Fukuroi City, Shizuoka Prefecture
Kakegawa Grand Hotel & Kuretakeo Group

Kazenosono

9587 Ubumi, Yutome-cho, Chuo-ku, Hamamatsu City, Shizuoka Prefecture

Eternal Hamamatsu

1-10-21 Higashiha, Chuo Ward, Hamamatsu City, Shizuoka Prefecture

Expand the bridal business in 10 facilities in the Tokai area in various ways.

Simple, luxurious, casual... there are just as many styles as the numbers of the couples. We are flexible to respond to such requests and proactively support various styles of weddings.

Kuretakeso x Former Aoba Residence Maison de Lien KURETAKESO

A first for Hamamatsu!! A wedding venue specializing in small groups. A private mansion with an attached garden can be rented for your wedding.



THE VILLA HAMANAKO

A spectacular wedding with a 180-degree panoramic lake view



GAMAGORI CLASSIC HOTEL

A classic hotel steeped in history and tradition. Guests can enjoy a large garden on the premises and a panoramic view of Mikawa Bay.



HAMAMATSU HATIMANGU KUSUNOKI CLUB THE KUSUNOKI CLUB

The unveiling party will be held in the oriental-style Izanaki Room. Kumotachi Room on the 2nd floor with a wonderful window view of lush greenery.



KANAZAWA KOKUSAI HOTEL

For the couple who pledge their eternal love We will support you with all our hearts for the best day of your life that will always remain in your heart.



THE OCEAN HAMANAKO BENTENJIMA RESOR THE OCEAN

Wedding in tropical-inspired ocean resort Marriage ceremony in Bentenjima embraced by Lake Hamana and the Pacific Ocean



KAKEGAWA GRAND HOTEL

A designer hotel wedding that arrives in 1 minute from Kakegawa Station. The wedding style of "THE ORIENTAL SUITE" brand is a new taste.



ANTHEA COTEAU

5-minute drive from Okazaki Station Fulfilling your ocean wedding in a private villa



NUMAZU RIVER SIDE HOTEL

enjoy a gourmet wedding with a 180-degree panoramic river view. A modern and stylish contemporary luxury hotel that combines the gentleness of the river flow with formality.



KAREN HAMANAKO WITH DOG

produced by kuretakeso / Business Partner Facilities Prime location: 5-minute drive from Kanzanji smart interchange (highway exit) Dog-friendly hotel with full amenities and services for your furry friends.



HOTEL Domestic Accommodations

Equipped with hardware for a relaxing stay.

We have devoted ourselves to developing guest-oriented facilities. We are seeking the level of guestrooms, bathrooms and even interior designs to provide relaxing moments to our guests.



Due to open 2027 autumn
Gamagori Classic Hotel Villa Building

You can see the whole of Oku-Mikawa Bay and Takeshima right in front of you.



Due to open 2026/summer
Villa Hamanako Marina Villa Building

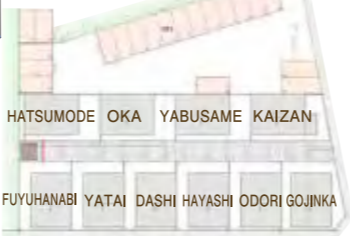


You can get a panoramic view of Oku-Hamanako.

Due to open 2027/spring
Kuretake Inn Fujinomiya Villa Building



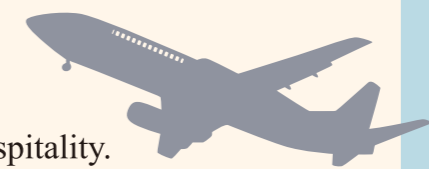
Japanese Streets Fujinomiya Festival Trip All rooms offer views of Mt. Fuji.



HOTEL Global Accommodations

The spirit of Japanese hospitality. Overseas...

Japanese and Japanese-speaking local staff are available 24 hours a day. We welcome our guests with the spirit of hospitality that the Kuretakeo Group has cultivated over many years.



SRIRACHA • Hotel Kuretakeo Thailand Sriracha

Hotel Kuretakeo KEMAN Jakarta • DELTAMA Bekasi, Indonesia Kuretakeo Sancrest Residence Deltamas

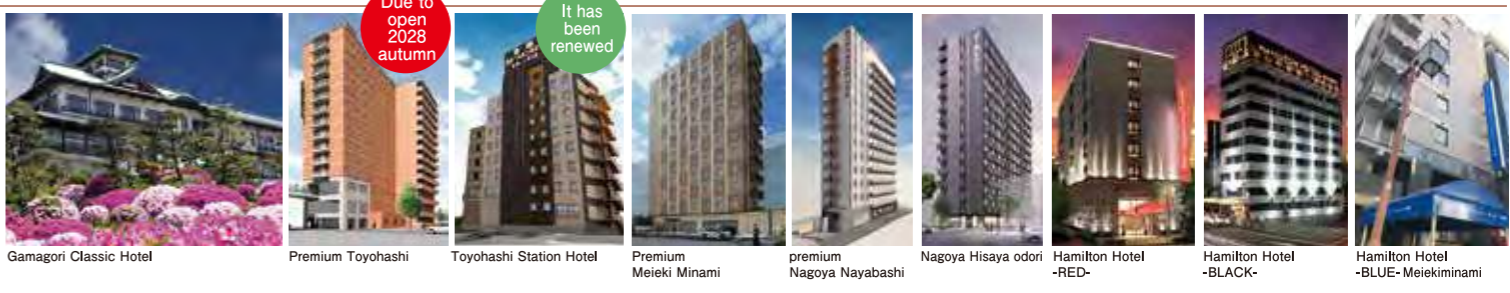
75 minutes by car from Soekarno-Hatta International Airport About 37km east of Jakarta
Kuretakeo Sancrest Residence Deltamas [105 rooms]
Commercial Lot Blok H/03 Kota Deltamas, Desa Hegarmukti, Cikarang pusat, Kabupaten Bekasi 17530



40 minutes by car from Soekarno-Hatta International Airport
Hotel Kuretakeo Keman Jakarta [108 rooms]
Jl. Bangka Raya No.7A Kemang-Jakarta Selatan 12730



60 minutes by car from Suvarnabhumi Airport Conveniently located near the center of Sriracha and downtown Access from each industrial park
Hotel Kuretakeo Thailand Sriracha [106 rooms]
63/3 Thetsaban 1 Road, Sriracha, Chonburi 20110 THAILAND



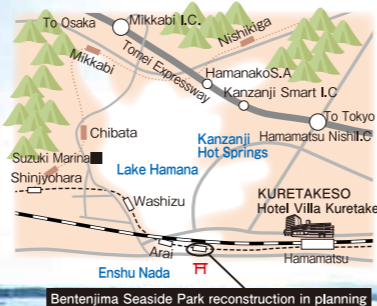
BENTENMJIMA

Bentenjima Seaside Park reconstruction in planning

Enhance Bentenjima: Gateway to Lake Hamana!

As a hub connecting Lake Hamana and Pacific Cycling Road, Bentenjima island is required to meet the demand for cycling tourism from both domestic and international visitors.

Bentenjima Cycle Gate: operated in partnership by JR Tokai and local tourism association.



Note: this image is for illustrative purpose, as the project is still at the planning stage.

BANQUET

To enlighten the time of gathering joy.

Restaurant and banquet business is our important business field, which involves product development, quality control, franchising and quality service. We aim a structure to offer more satisfying service.



CATERING

Boxed lunch and patisserie

Original creative bento at the office or at home.

Full of originality from traditional Japanese food with fresh seasonal ingredients. We are planning a creative menu.

Kyoto Kaiseki cuisine
As a Japanese restaurant
70 years of tradition
The atmosphere
of the four seasons
Feel and taste
with your five senses
Original creative bento.



IKARUGACHO

Business attracting project of IKARUGACHO Marche and accommodations, etc.

[A luxurious stay where you can experience art]

A trip to the World Heritage Site of the ancient capital of Nara

World Heritage



Funazuka-kofun (ancient burial mound)

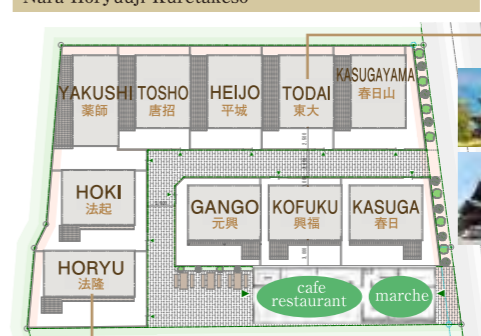


Estimated to have been built around late 6th century. (late Kofun period); its stone chamber is believed to have been broken around 7th century. 8.5 m (d) x 1.5 m (h) circular-shaped structure.



Terrace Funazuka: a cafe restaurant inspired by Funazuka-kofun

Nara Horyuji Kuretakeko



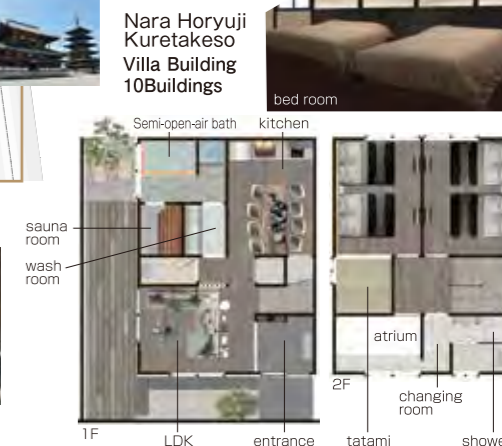
Sublime experience in ten villas evoking the ancient atmosphere focusing on World Heritage Site.



Streetscape and alleyway



Semi-open-air bath



Nara Horyuji Kuretakeko Villa Building 10Buildings



"Sales expansion project" Small sweets & frozen commercialization

PATISSERIE

Sales expansion project

Started a new project to respond to the diversification of lifestyles. Focusing on the ideas and techniques of patisserie chefs, we will start a "Sales expansion project" from the summer of 2022, where we can make the most of a wider range of activities.



Vending machine for patissier-made frozen bread and sweets



Numazu Riverside Hotel

Kakegawa Grand Hotel



Wide variety: CHABATAKE, financiers, assorted cookies, etc. (also at Kakegawa castle)

Kuretakeko



breakfast for business hotels is prepared in a central kitchen in Hamamatsu city. We also ship handmade quiche to the quiche restaurant in the north garden.

Nara Park Hotel



Warabi mochi and summer-only shaved ice are available. Shaved ice is a specialty of Nara city and is recommended. I'm excited.

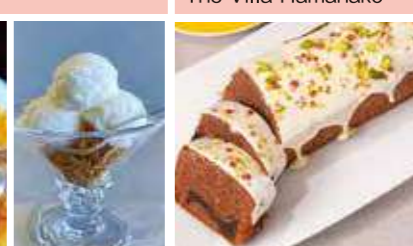
The Ocean



Gamagori Classic Hotel



The Villa Hamanako



Kanazawa Kokusai Hotel



RESTAURANT

Restaurants and
chin restaurant industry



To cater to everyone's taste,
We operate 26 restaurants and
restaurant franchise.

Private Kaiseki **Hachibatei** Kuretakeko 4F



You can enjoy dinner in a completely private room.



We offer dishes that are elegantly prepared with fresh local produce from the mountains and the sea. All seats are completely private rooms with taste. You can relax and spend precious time with your special guests or your family.



In addition to meals, we will help you in various ways according to the scene of your family, friends, and important people of your life, milestones of life, and celebration scenes.

THE AKATORII Restaurant



The Villa Hamanako BBQ terrace



"Lake Hamana Cuisine" full of the blessings of the sun

Ristoranre —MEGURU— The Kusunoki Club 1F



We offer dishes using seasonal ingredients, centering on daily pasta inspired by the chef.

Restaurant Yakiniku King



Restaurant Hamanako



Working Space K's Cafe



Vietnamese restaurant HANOI



Kakegawa Castle Park



Takenomaru sweets cafe
We offer sweets and drinks made by Kakegawa Grand Hotel exclusive patissier. You can spend a relaxing and comfortable time in the tranquility.

Cafe & Bakery Gama Cafe & Bakery



Terrace seats
About 5 minutes on foot from Gamagori Station.
Produced by Gamagori Classic Hotel. luxury bread
It is finished with a taste that you will not get tired of even if you eat it every day.

Convention hall PLAZA VERDE



Cafe Verde [Cafe verde]1F
Shizuoka Yatai 2F

Gamagori Classic Hotel

At the heart of Mikawa Bay Quasi-National Park amid Atsumi and Chita Peninsulas. Superb hilltop view of Takeshima (natural treasure) and Mikawa Bay. Elegant dining experience featuring local delicacies at the main French dining room or Teppanyaki-style Rokkakudo – Iron-plate grilled specialties.



日本クラシックホテルの会 JAPAN CLASSIC HOTEL ASSOCIATION

It is formed by nine hotels built before the World War II, maintaining its buildings (including repair and restoration), and recognized as a cultural property or an industrial heritage, etc. Japan classic hotel association is composed of Nikko Kanaya Hotel, Fujiya Hotel, Mampai Hotel, Nara Hotel, The Tokyo Station Hotel, Hotel New Grand, Gamagori Classic Hotel, Unzen Kanko Hotel, and Kawana Hotel.

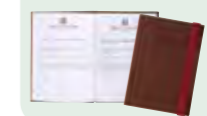
The Japan Classic Hotel Association was established by nine representative Japanese hotels that continue to preserve history and tradition. In addition to the elegant castle-like exterior, the interior and furnishings retain the traditional Art Deco style of the former Gamagori Hotel.



The city flower, azalea, is in full bloom in a beautifully maintained garden

Classic Hotel Passport

We collaborated to issue the passport over nine hotels which joins Japan classic hotel association.



Main dining room 2F [Lounge bar] Azalea 2F

THE COVE and SARYO OUSHUKU TEI, unique, traditional luxury inns ~Miya Bihaku-sen hot spring~

In celebration of its 90th anniversary, we launched new accommodation services at landmarks designated as National Tangible Cultural Properties. We opened THE COVE as a private historic villa, and converted OUSHUKU TEI, another Tangible Cultural Property, into SARYO OUSHUKU TEI imbued with Japanese aesthetics.

THE COVE



SARYO OUSHUKU



Kanazawa Kokusai hotel



Numazu Riverside Hotel



Kakegawa Grand Hotel



CAST

Staffs that help to complete your drama

KTS dormitory Renovation for staff comfort 12 private rooms

Kitchen, bidet toilet, 32-inch TV, shower unit, A/C, IH stove, Wi-Fi, assigned storage, etc.



"People" determine quality! It's not "work" if it's not fun!!

In order to enrich the quality of life of everyone involved, we provide food, hospitality, and spaces that will energize our customers for tomorrow, and work to create excitement every day. The staff who are close to the customer's impression are also energized as a party of "impression".

We believe that the more impressions we have, the richer our lives will be. By enriching the QOL of each individual, we will create a virtuous cycle in the community and society, and create a society in which all people involved can achieve self-fulfillment. We aim to



■ manager
Numazu Riverside Hotels
We are able to provide a service that satisfies people with any kind of disability. We strive every day to provide customer-friendly service.



■ front
Kitanoniwa The Kuretakeso
I follow our guidelines and philosophy to deliver attentive guest service. I also mentor junior colleagues, serving as a role model.



■ Wedding Director
Kuretakeso
Modern weddings can be conducted regardless of scale or number of attendees. I propose the ideal plan for our guests.



■ planner
The villa hamanako
We will support you to make your once-in-a-lifetime wedding a little happier. Enjoy this resort and create memories that will last a lifetime.



■ corporate sales
Kuretakeso
We will visit important customers and plan banquets and party meals according to customer's wishes. We will contact you kindly and politely.



■ planner
Hamamatsu Hachimangu
I love talking with my customers. In meetings, we are conscious of even small things so that we can build good relationships.



■ Master chef of "Kano"
Kanazawa kokusai Hotel
I always strive to prepare cuisine that allows our servers to confidently present it to our guests.



■ front
Kitanoniwa The Kuretakeso
Our hotel staffs are here to provide a place where our valued guests can recharge for days ahead, offering housekeeping service, comfortable surroundings, and well-prepared breakfast.



■ Japanese cooking
Gamagori Classic Hotel
We plan creative bento boxes full of original ideas and cook handmade bento boxes using fresh seasonal ingredients.



■ photographer
Kuretakeso
Location photos and small wedding photos will be taken in one day, making the most of the expressions of the couple.



■ planner
Kuretakeso sanncrest residence deltamias
We are waiting for you at Deltamas City, 37km from Jakarta. We offer Japanese hospitality and comfortable living.



■ Service Manager
Central Japan Service Manager
I oversee food and beverage operations across our accommodations in central Japan region. It is my mission to deliver an experience that enriches quality of life for our guests through gracious service.



■ patisserie
The villa hamanako
We create beautiful cakes to suit any customer's requirements. The wedding cake I made will be used by the two of you...



■ main building front desk
Kuretakeso
We will greet customers who come to the front desk of the main building with a smile and guide them to their venue.



■ planner
The villa hamanako
Weddings aren't all about making things extravagant. We will do our best to support various styles of weddings in a way that suits you.



■ western cooking
Kuretakeso
We do our best to make sure that the bride and groom and guests have a delicious and enjoyable time.



■ hotel reception
Kuretakeso inn hamanako
We strive to welcome our valued guests to Kuretakeso Inn Hamanako with a smile.



■ hotel manager
Kuretakeso inn premium fukuroi ekimae
We are particular about bedding and menus to provide comfortable sleeping and breakfast.



■ guest services
The villa hamanako
We are aware of what our customers are looking forward to. We are pursuing "excitement" so that our customers' lifestyles can be enriched even a little.



■ nursery school
Hamamatsu takenoko hoikuen
I would like to support the elimination of childcare waiting lists and the balance between work and childcare for women.



■ guest services
Kanazawa kokusai Hotel
I make use of my experience and know-how to welcome customers with a smile and do my best to make them feel comfortable.



■ guest services
The ocean
In the summer, the resort terrace BBQ plan where you can see the sea starts. All the staff will help you to have a fun time.



■ hotel reception
Kuretakeso inn Hamamatsuscho
We welcome you with a smile so that we can provide a relaxing space for our customers. Please use Funabori when you come to Tokyo.



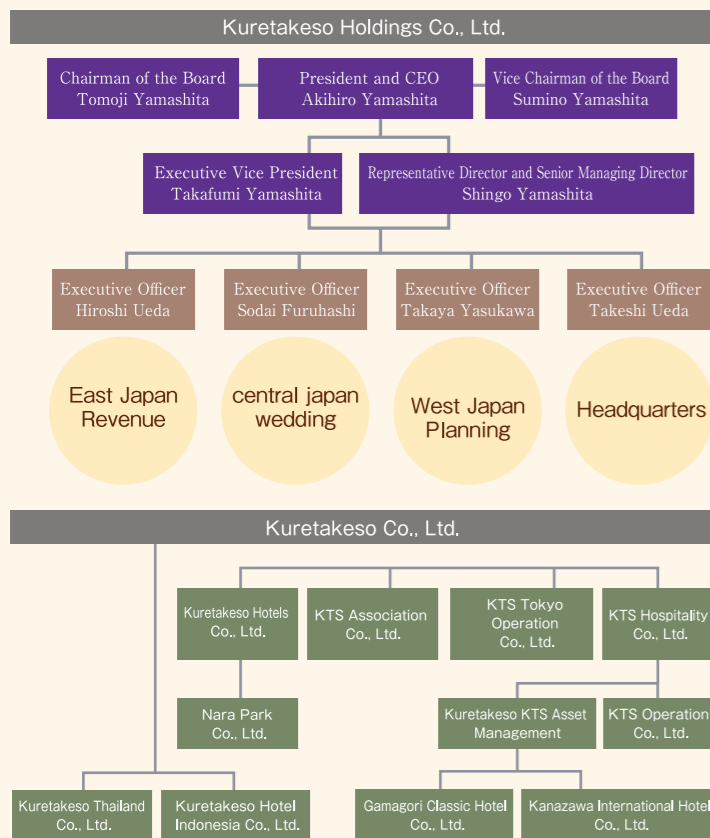
■ Venue introduction and human resources
Effortless
I am responsible for providing assistance to weddings and introducing venues. I also serve as a trainer for our staff. My principle is to deliver hospitality with sincerity, always valuing the acquiescence of each customer.



■ banquet service
Kuretakeso
We are in charge of wedding receptions, meetings, business trip parties and restaurant services.



■ Japanese cooking
Kuretakeso
My mission is to convey the value of Japanese cuisine to all our guests, placing the utmost importance on Dashi, the essence of Japanese culinary art.



Corporate Identity

KURETAKESO group exists in society, now and for the future, to enrich the lifestyles of all our valued partners, to contribute to your well-being, and to create a peaceful and prosperous society.

Mid-term Management Plan Policy

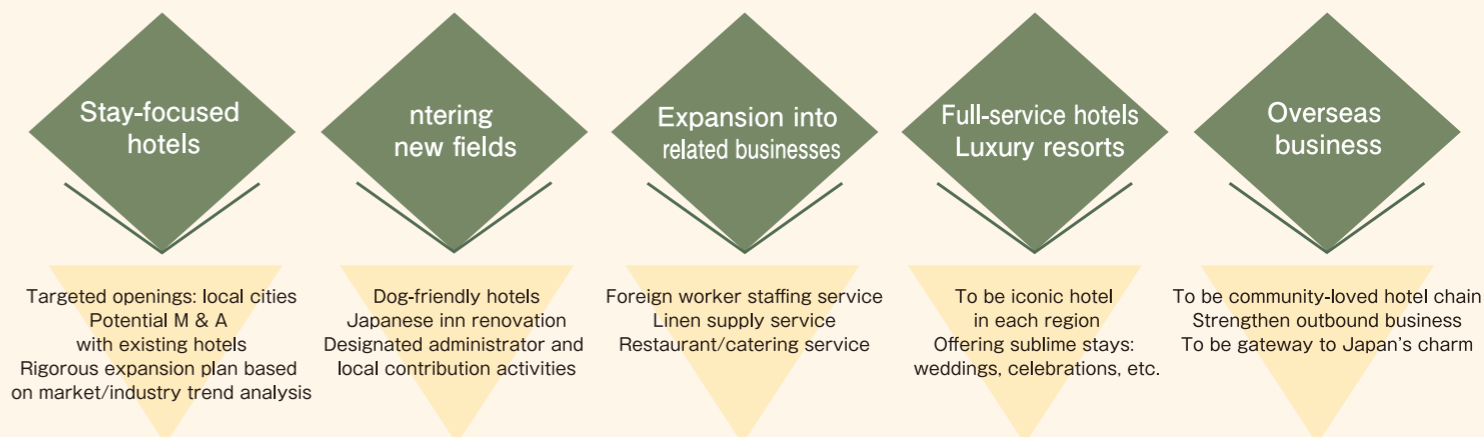
Organizational Development and Initiatives for Mid-term Management Plan Goals

Enhance KURETAKESO's Corporate Value

Group sales: 20 billion yen / Operating profit: 2 billion yen

Corporate Conduct Guidelines

1. Spare no effort for the guest.
2. Look for solutions, not obstacles.
3. Do what you can only do now.
4. Challenge to pursue new value.
5. We all grow the culture we created.
6. Never let any guest leave with a complaint.



For stable revenue management, a communicative workplace, and a self-driven culture.

To be a dynamic organization, we strive to foster a creative environment, and to improve sales, customer satisfaction, employee satisfaction and cross-team collaboration, through initiatives such as interactions across all levels and internal secondment.